

Project Brief: Water Infrastructure in New Zealand – Urban Water Resilience with a Focus on Extreme Weather Events

WATER INFRASTRUCTURE APPLICATIONS

- Much of New Zealand's water infrastructure is outdated and particularly vulnerable to extreme weather events and other impacts of climate change.
- The German-New Zealand Chamber of Commerce (GNZCC) works with German companies (primarily SMEs) that provide innovative technologies and intelligent system solutions designed to work in tandem with resilient infrastructure.
- The project serves as a catalyst for seamless knowledge exchange between Germany and New Zealand, actively supporting New Zealand in strengthening its existing water infrastructure, and promotes the development of resilient solutions tailored to the country's specific needs.

Overview

This project is part of the Market Entry Programme (MEP), funded by the German Federal Ministry for Economic Affairs and Energy (BMWE). The initiative aims to support German small and medium-sized enterprises (SMEs) in entering foreign markets. The project consists of three main components: Market and industry information on the New Zealand environment will be prepared for the German participants. A business delegation will visit New Zealand where targeted matchmaking and networking with relevant New Zealand stakeholders will be organised. The German participants will also have the opportunity to present their technologies and solutions to a local professional audience at a dedicated business conference.

Target Market and Potential

An ageing infrastructure, limited technical expertise, financial constraints, and climate change-driven extreme

weather events all pose risks to New Zealand's water infrastructure. Drinking water is often sourced from dams and rivers. Challenges arise during droughts, when reduced rainfall lowers water reserves. On the flip side, heavy rainfall can overwhelm wastewater systems, leading to the discharge of untreated water into the environment.

Extreme weather events are putting pressure on water resilience in New Zealand. To ensure a robust and reliable water supply under such conditions, significant investment in existing infrastructure is essential. This includes preventing potential leaks and pipe failures, avoiding overflows in wastewater systems, securing continuous access to safe drinking water, and upgrading outdated pump stations to prevent environmental harm in the event of power outages or excessive inflow. New Zealand has already recognised the urgency of the issue and launched several regional and national initiatives to address it.

Supported by:



on the basis of a decision
by the German Bundestag

German-New Zealand Chamber of Commerce Inc.

Level 14, 188 Quay Street, Auckland 1010, New Zealand

p: +64 9 304 0120

email: kcurtis@germantrade.co.nz

w: www.germantrade.co.nz

Overview of the Reliability of the NZ Water Infrastructure 2021/22

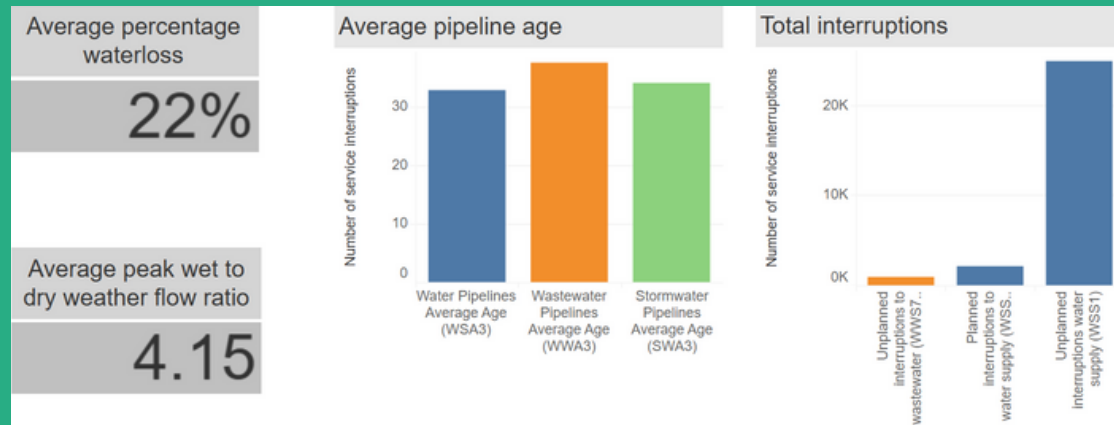


Fig. 1: Reliability Overview. National Performance Review Dashboard 2021/2022 published by Water New Zealand.
<https://www.waternz.org.nz/reliability/>

How can the project help?

The water infrastructure project serves as a bridge, connecting German expertise and innovative solutions from industry leaders with New Zealand's specific needs. These adaptable solutions offer practical applications across a range of scenarios.

Given New Zealand's ageing infrastructure, limited monitoring, and increasing extreme weather events, the project has strong potential to significantly enhance water resilience – drawing on German expertise and innovative solutions from German companies.

Benefits

The project offers mutual benefits for both German manufacturers and New Zealand. For German companies, it provides a platform to showcase advanced water infrastructure solutions and enter a market with significant demand.

New Zealand will benefit from innovation and technology "Made in Germany" as well as from the expertise and know-how of the participating German companies. It will gain valuable tools to better adapt to climate change and manage weather-related challenges to its water infrastructure.

How will the project work?

The project aims to identify key requirements and relevant stakeholders in New Zealand's water infrastructure sector, while actively involving and connecting German participants. To this end, the GNZCC is conducting a targeted market and industry analysis and is supporting the market entry of German companies offering tailored solutions to strengthen water infrastructure resilience in New Zealand. As part of the business delegation trip, a specialist conference will be held to present technologies, solutions, and findings. The GNZCC will also facilitate targeted meetings between the German participants and New Zealand companies and organisations. The project is supported by the German Federal Ministry for Economic Affairs and Energy (BMWE).

Supported by:



on the basis of a decision
by the German Bundestag

German-New Zealand Chamber of Commerce Inc.

Level 14, 188 Quay Street, Auckland 1010, New Zealand

p: +64 9 304 0120

email: kcurtis@germantrade.co.nz

w: www.germantrade.co.nz